

PRODUCT INFORMATION PACKET

Model No: 5KH49MN6057S

Catalog No: H137

1/4 HP General Purpose Farm Duty Motor, 1 phase, 1200 RPM, 115 V, 56 Frame, TENV
Single Phase Farm Duty Motors



Regal and Marathon are trademarks of Regal Beloit Corporation or one of its affiliated companies.
©2020 Regal Beloit Corporation, All Rights Reserved. MC017097E

REGAL



Nameplate Specifications

| | | | |
|----------------------------|---------------------------------|------------------------|------------|
| Output HP | 0.25 Hp | Output KW | 0.19 kW |
| Frequency | 60 Hz | Voltage | 115 V |
| Current | 5.6 A | Speed | 1140 rpm |
| Service Factor | 1 | Phase | 1 |
| Efficiency | 53 % | Power Factor | 0 |
| Duty | Continuous | Insulation Class | B |
| KVA Code | M | Frame | 56 |
| Enclosure | Totally Enclosed Non Ventilated | Thermal Protection | AUTO |
| Ambient Temperature | 40 °C | Drive End Bearing Size | 6203 |
| Opp Drive End Bearing Size | 6203 | UL | Recognized |
| CSA | Yes | CE | N |

Technical Specifications

| | | | |
|--------------------|----------------|-----------------------|----------------------------|
| Electrical Type | Split Phase | Starting Method | SM |
| Poles | 6 | Rotation | Counterclockwise/Clockwise |
| Mounting | Resilient Base | Motor Orientation | ANY |
| Drive End Bearing | BALL | Opp Drive End Bearing | Ball |
| Frame Material | Rolled Steel | Overall Length | 10.48 in |
| Frame Length | 6.15 in | Shaft Diameter | 0.630 in |
| Shaft Extension | 1.88 in | | |
| Connection Drawing | 52A105379AA | Outline Drawing | 52A107714P4 |

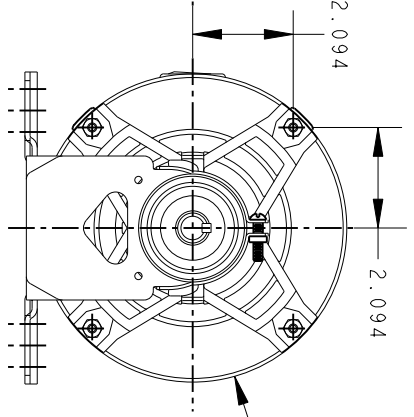
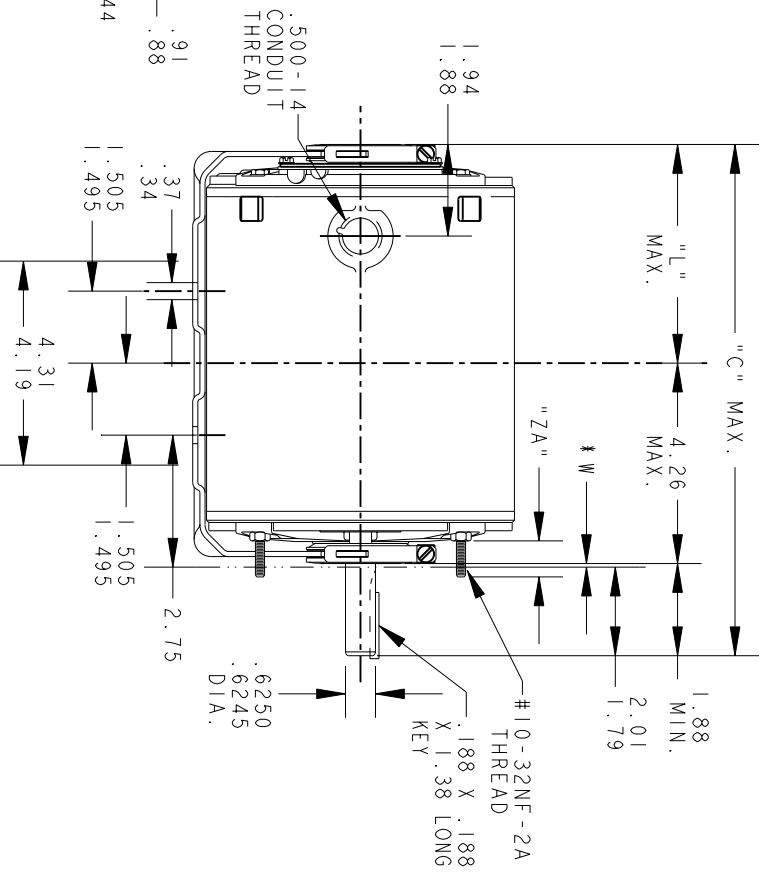
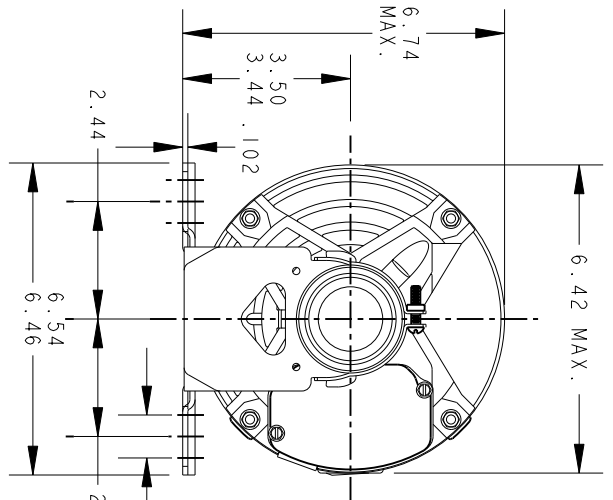
This is an uncontrolled document once printed or downloaded and is subject to change without notice. Date Created:03/11/2020

THIRD ANGLE PROJECTION



REVISIONS

| REV. | DESCRIPTION | DATE | APPROVED |
|------|----------------------------------|----------|-----------|
| 4 | RETRACTED, ADDED PART #4. | 04/22/94 | M.D. PAPE |
| 5 | CHG TO RBC FORMAT PER IS05-11777 | 03/01/06 | SUDHA |



VIEW OF P.E. END SHIELD

* W IS A VARIABLE CLEARANCE DUE TO VARIATIONS IN PARTS AND ASSEMBLY

ALL DIMENSIONS ARE IN INCHES

| 4 | 3 | 2 | 1 | P |
|-------|-------|-------|-------|----------|
| KH/K | KH/K | KH/K | KC | TYPE |
| 49 | 49 | 46 | 46 | GE SIZE |
| 56 | 56 | 56 | 56 | NEMA FR. |
| 10.48 | 11.48 | 10.88 | 10.88 | "C" |
| 4.22 | 5.22 | 4.62 | 4.62 | "L" |
| .62 | .62 | .62 | .62 | "ZA" |

| 4 | 3 | 2 | 1 | P |
|------|------|------|------|------------|
| 6.15 | 7.15 | 6.55 | 6.55 | MIN. SHELL |



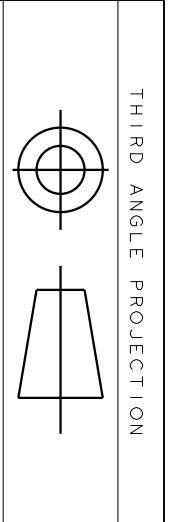
REGAL-BELOTT CORPORATION

OUTLINE

GENERAL PURPOSE MOTOR TENV - BALL BEARING - RESILIENT BASE EXTENDED CLAMP SCREWS FWF - 40 FRAME REDESIGN

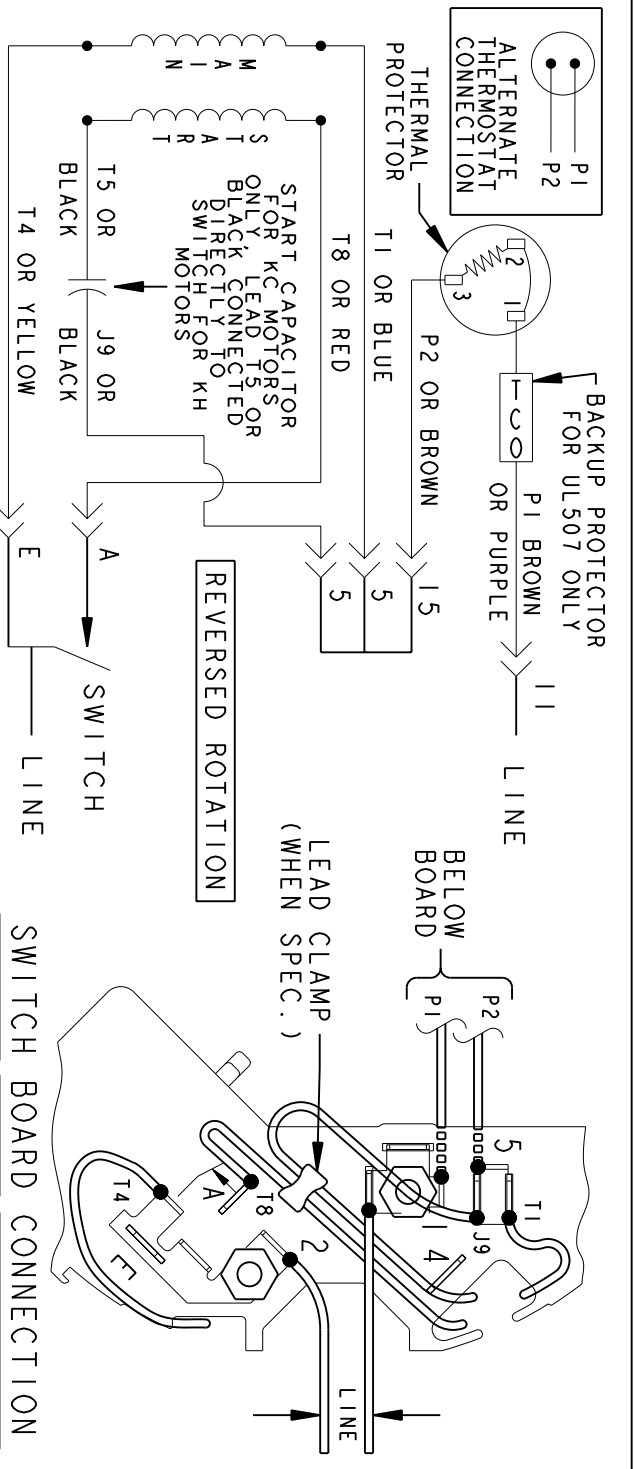
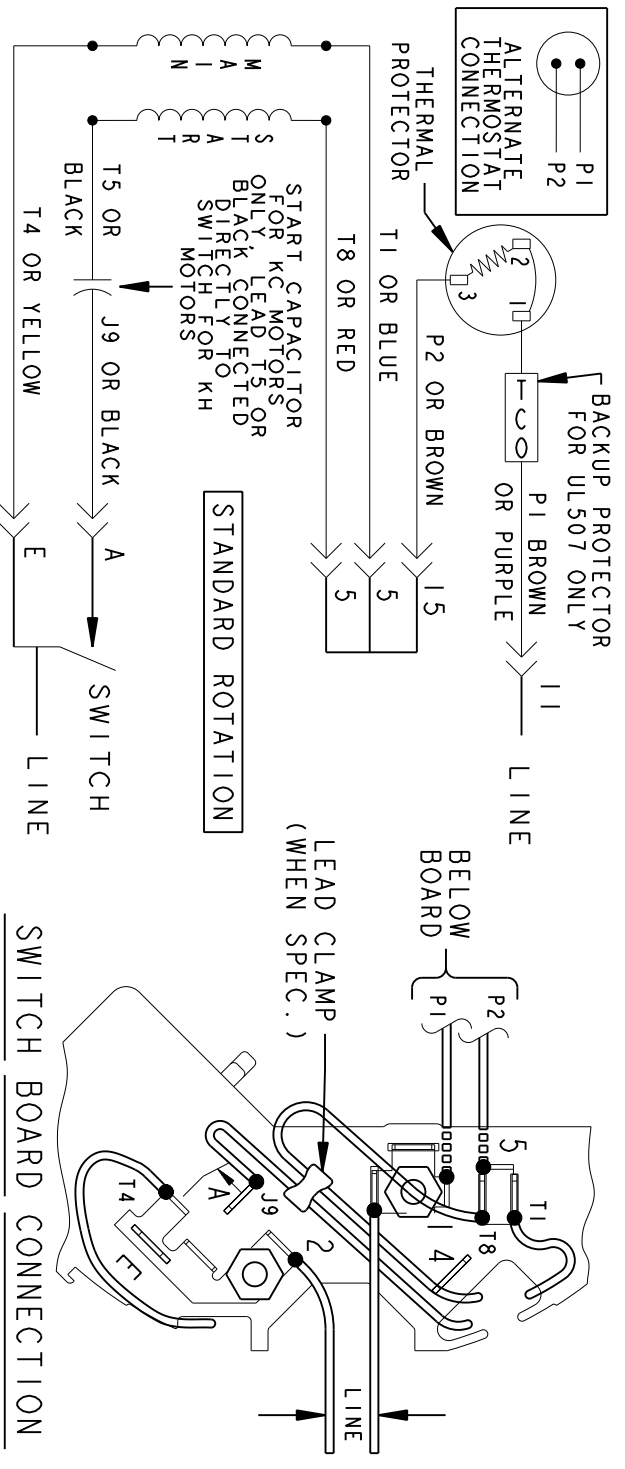
| | | | | |
|-------------------------------|--------------|------------|----------|----------|
| FOR ADDITIONAL INFO REFER TO: | MODEL | B. JOHNSON | DATE | 08/13/91 |
| APPLIED PRACTICES | CHECKED | ENGRG | MFG | QUALITY |
| DIMENSIONS ARE IN INCHES | ISSUED | M.D. PAPE | 04/22/94 | |
| MATERIAL | SOLID MODEL: | 52A107714 | | |

| | | | |
|--------------|--------------|-----------|--------------|
| TITLE | SCALE: 0.250 | REF. No.: | SHEET 1 of 1 |
| SIZE DRAWING | A | | |
| REV | 52A107714 | REV | 5 |



| REV. | DESCRIPTION | DATE | APPROVED |
|------|----------------|----------|----------|
| 6 | UPDATED FORMAT | 12/01/05 | MAM |

EITHER ROTATION-SINGLE VOLTAGE-TYPE KC OR KH-WITH THERMAL PROTECTOR



NOTE #1 - TO REVERSE ROTATION INTERCHANGE RED (T8) AND BLACK (J9-KC OR T5-KH) LEADS.
 NOTE #2 - WHEN MORE THAN ONE CAPACITOR IS USED CONNECT IN PARALLEL.

SWITCH (C) - 115D958AB REF. DIAG. - 121A851 CONN. LABEL - 52X332048

| SIGNATURES | DATE |
|--------------------------|-----------------|
| MODEL M.D. PAPE | 06/29/87 |
| DETAIL | |
| CHECKED | |
| ENGRG | |
| MFG | |
| QUALITY | |
| ISSUED | M.D.P. 03/08/00 |
| SOLID MODEL: 52A105379AA | |

REGAL-BELOIT CORPORATION

REGAL-BELOIT

CONNECTION DIAGRAM

FMF - 30 FR SWITCH REDESIGN

SCALE: 1.000 REF. No.:

52A105379AA

REV 6

SHEET 1 of 1